

WE MOVE THE FACADES.

Since 1988, BeluTec has been developing and producing individual door and facade systems at the Lingen plant in Emsland. From advice, conception and planning as well as installation and maintenance - behind all this is a strong team of technicians, project managers and experts with many years of experience in the field of door systems and facades.

# BÜN DIG

„Bündig“ - Flush –  
The architectural magazine.

Visit our  
buendig.blog



## COMPETENCE FROM ONE SOURCE



**Innovative door & facade systems**

Folding Systems | Sectional doors  
Facade-flush doors  
Industrial doors | Garage doors

100% MADE IN GERMANY



FLUSH GATES



FOLDING SYSTEMS OUTDOORS



FOLDING SYSTEMS INDOOR



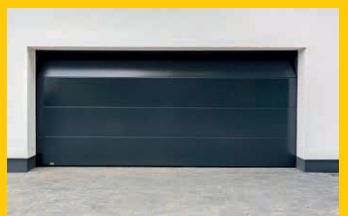
SIDE SECTIONAL DOORS



INDUSTRIAL DOORS

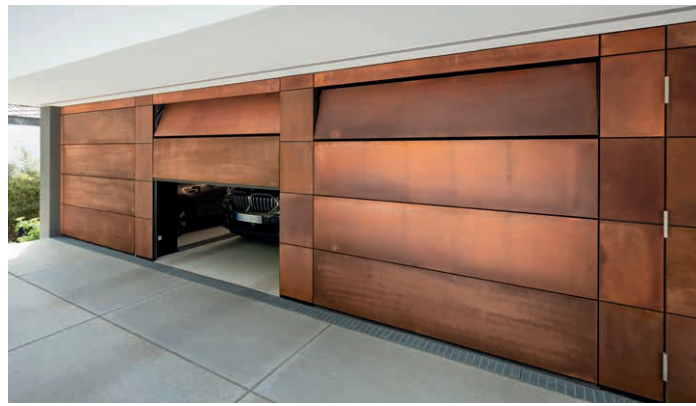
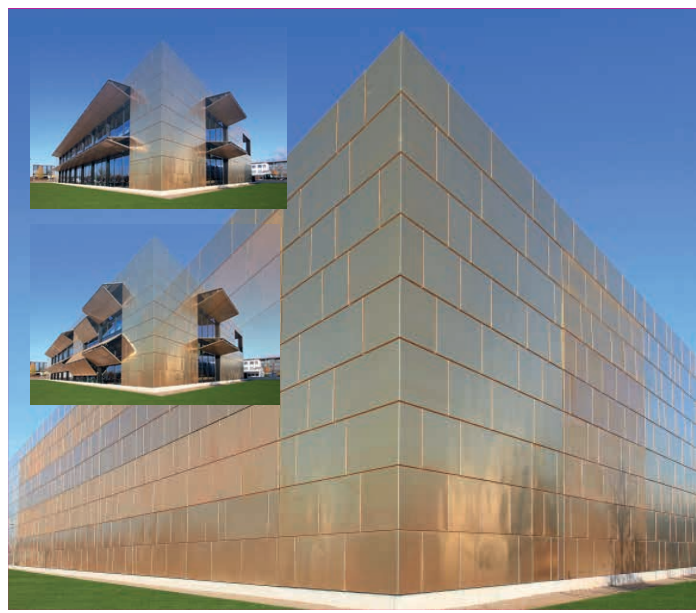
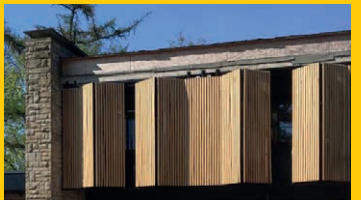


GARAGE DOORS



### INNOVATIONS

- Telescopic facade elements with photovoltaic modules  
Energy-producing sun protection
- Flush sliding folding shutters  
Sun, heat and burglary protection - all in one facade



Belu Tec Vertriebsgesellschaft mbH  
 Am Seitenkanal 3  
 49811 Lingen (Ems)  
 Tel.: +49 591 912040

